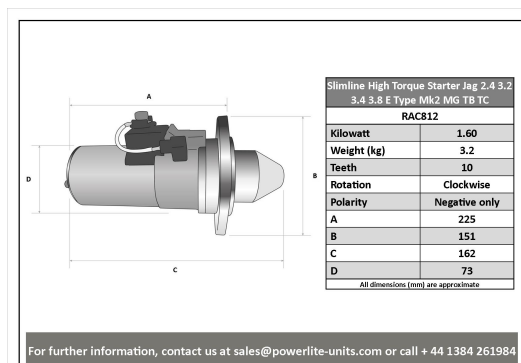
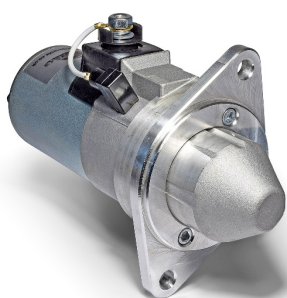


# High Torque Starter Motors

## RAC812

Direct replacement for original starter, replaces large type 37.5mm pinion.

Slimline unit for Jaguar 2.4, 3.4, 3.8, E Type, Mk II (37.5mm pinion) and MG TB & TC Deceptively powerful, this unit features an epicyclic in-line gear box which delivers extra power when engaged and an internal solenoid. Lightweight, durable and easy to fit, this unit delivers maximum power with minimum efficiency. Designed for negative earth vehicles only.



### RAC812

| Make   | Model                  | Engine Size | Year        |
|--------|------------------------|-------------|-------------|
| Jaguar | 240 (37.5mm pinion)    | 2.4         | 1967 - 1969 |
| Jaguar | 340 (37.5mm pinion)    | 3.4         | 1967 - 1969 |
| Jaguar | E Type (37.5mm pinion) | 3.8         | 1961 - 1968 |
| Jaguar | MK II (37.5mm pinion)  | 2.4         | 1959 - 1967 |
| Jaguar | MK II (37.5mm pinion)  | 3.4         | 1959 - 1967 |
| Jaguar | MK II (37.5mm pinion)  | 3.8         | 1959 - 1967 |
| Jaguar | S Type (37.5mm pinion) | 3.4         | 1963 - 1968 |
| Jaguar | S Type (37.5mm pinion) | 3.8         | 1963 - 1968 |
| MG     | TB Midget              | 1250        | 1939 -      |
| MG     | TC Midget              | 1250        | 1945 -      |



Made in the UK 

**RAC812**

| Item      | Value   |
|-----------|---------|
| Kilowatts | 1.60 kW |
| Teeth     | 10      |
| Voltage   | 12 V    |
| Weight    | 3.20 kg |