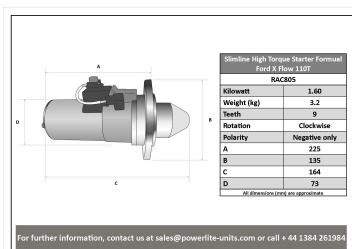
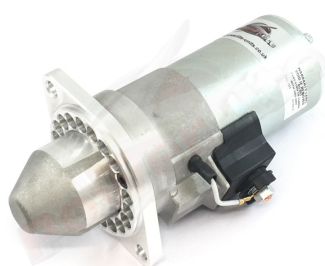


# High Torque Starter Motors

## RAC805

Replaces Lucas Inertia Type Starter Motor.

Slimline Formula Ford kent engine with Hewland Mk8/9 box 110T Ring gear Deceptively powerful, this unit features an epicyclic in-line gear box which delivers extra power when engaged and an internal solenoid. Lightweight, durable and easy to fit, this unit delivers maximum power with minimum efficiency. Designed for negative earth vehicles only.



### RAC805

Make	Model	Engine Size	Year
Ford	Formula Ford		

### RAC805

Item	Value
Kilowatts	1.60 kW
OEM	Lucas
Teeth	9
Voltage	12 V
Weight	3.00 kg