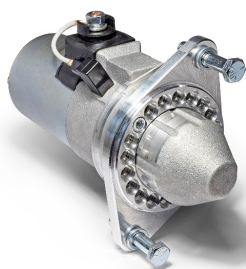


High Torque Starter Motors

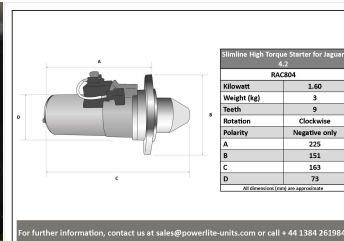
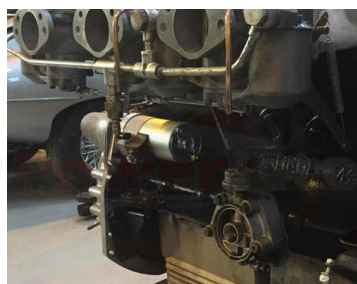
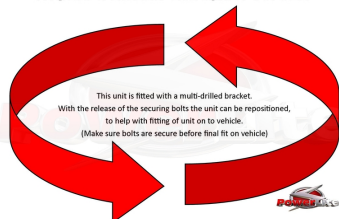
RAC804

Direct Replacement for Original Starter - negative earth applications only

Slimline unit for Jaguar E Type with Straight 6, 4.2l engine. Deceptively powerful, this unit features an epicyclic in-line gear box which delivers extra power when engaged and an internal solenoid. Lightweight, durable and easy to fit, this unit delivers maximum power with minimum efficiency. Designed for negative earth vehicles only.



MULTI-DRILLED BRACKET FITTED



RAC804

Make	Model	Engine Size	Year
Jaguar	E Type with Straight 6	4.2	

RAC804

Item	Value
Kilowatts	1.60 kW
Teeth	9
Voltage	12 V
Weight	3.20 kg