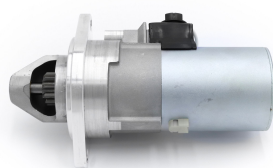
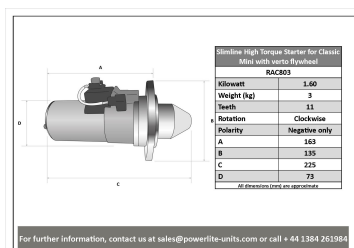


# High Torque Starter Motors

## RAC803

Slimline type unit to suit Mini with Pre Engaged Ring Gear.

Slimline fitting for Classic Mini where "verto" flywheel and pre engaged unit were fitted Deceptively powerful, this unit features an epicyclic in-line gear box which delivers extra power when engaged and an internal solenoid. Lightweight, durable and easy to fit, this unit delivers maximum power with minimum effort. Designed for negative earth vehicles only.



RAC803			
Make	Model	Engine Size	Year
Austin	Mini (Pre Engaged Ring Gear)	1000 - 1275	up to 1982
Mini	Pre-engaged for Verto flywheel	1000 - 1275	up to 1982

RAC803	
Item	Value
Kilowatts	1.60 kW
Teeth	11
Voltage	12 V
Weight	3.00 kg