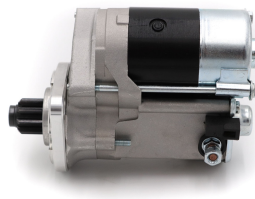
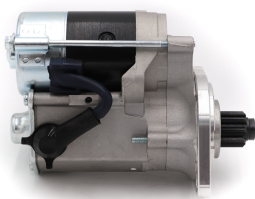


High Torque Starter Motors

RAC511

Direct Replacement For Original. 6 VOLT ONLY.

Porsche 356, 6 Volt only Strong, powerful, offset gear-reduced starter motor, delivering huge cranking torque through a set of steel internal gears. Lightweight, compact and durable this unit starts the engine faster with immense power, whilst drawing less current from the battery.



RAC511

Make	Model	Engine Size	Year
Porsche	356 6 volt		

RAC511

Item	Value
Kilowatts	1.00 kW
Teeth	9
Voltage	6 V
Weight	3.80 kg