



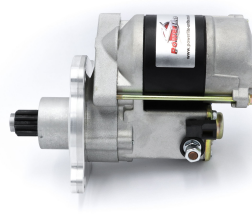
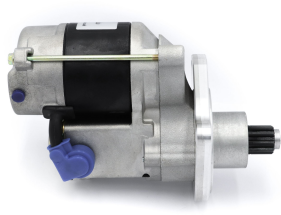
Made in the UK 

# High Torque Starter Motors

## RAC427

Direct replacement for original unit. Fits V8 engine with 4 speed gearbox. Replaces starter with threaded mounting holes.

Rolls Royce Cloud II, III, Bentley S2,S3 V8, 4 speed, unit has threaded mounting holes Strong, powerful, offset gear-reduced starter motor, delivering huge cranking torque through a set of steel internal gears. Lightweight, compact and durable this unit starts the engine faster with immense power, whilst drawing less current from the battery.



RAC427			
Make	Model	Engine Size	Year
Bentley	S2	6230	1960 - 1962
Bentley	S3	6230	1962 - 1965
Rolls Royce	Cloud II	6230	1960 - 1962
Rolls Royce	Cloud III	6230	1963 - 1966

RAC427	
Item	Value
Kilowatts	1.40 kW
Teeth	9
Voltage	12 V
Weight	3.70 kg