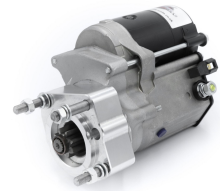
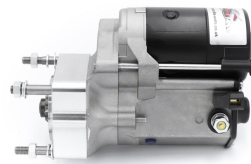
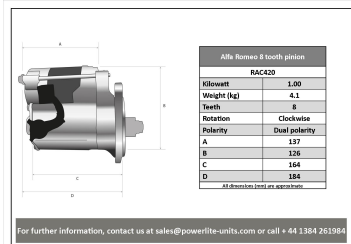


Alfa Romeo

RAC420

Direct replacement for original unit.

Classic Alfa Romeo, Guilietta, Giulia, GT Junior, 1750 Sprint Veloce etc. with 8 tooth pinion Strong, powerful, offset gear-reduced starter motor, delivering huge cranking torque through a set of steel internal gears. Lightweight, compact and durable this unit starts the engine faster with immense power, whilst drawing less current from the battery.



RAC420

Make	Model	Engine Size	Year
Alfa Romeo	Duetto with 8 tooth pinion	All	1966 - 1968
Alfa Romeo	Giuletta SS with 8 tooth pinion	All	1957 - 1966
Alfa Romeo	Giuletta with 8 tooth pinion	All	1956 - 1965
Alfa Romeo	Giulia 1300 with 8 tooth pinion	All	1967 - 1971
Alfa Romeo	Giulia 1600Ti with 8 tooth pinion	All	1967 - 1971
Alfa Romeo	Giulia Spider with 8 tooth pinion	All	1956 - 1965
Alfa Romeo	Giulia SS with 8 tooth pinion	All	1957 - 1966
Alfa Romeo	GT Junior with 8 tooth pinion	All	1967 - 1977
Alfa Romeo	Spider 1750 Veloce with 8 tooth pinion	All	1968 - 1970

RAC420

Item	Value
Kilowatts	1.00 kW
Teeth	8
Voltage	12 V
Weight	4.10 kg