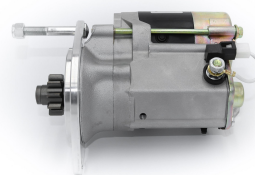
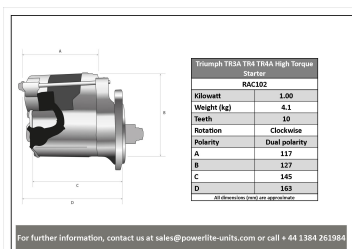


High Torque Starter Motors

RAC102

Direct replacement for original unit when fitted with the BOLT ON RING GEAR. Fitted with captive stud to aid fitting. Triumph TR3A TR4 TR4A Strong, powerful, offset gear-reduced starter motor, delivering huge cranking torque through a set of steel internal gears. Lightweight, compact and durable this unit starts the engine faster with immense power, whilst drawing less current from the battery.



RAC102

Make	Model	Engine Size	Year
Triumph	TR3A	1991/2138	1957 - 1962
Triumph	TR4	2138	1961 - 1965
Triumph	TR4A	2138	1965 - 1967

RAC102

Item	Value
Kilowatts	1.00 kW
Teeth	10
Voltage	12 V
Weight	4.10 kg