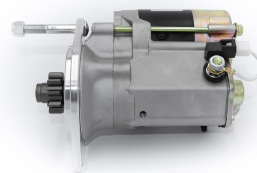
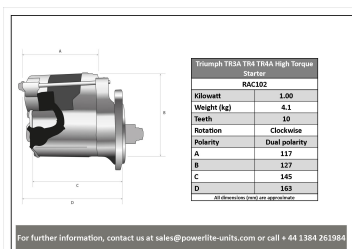


# High Torque Starter Motors

## RAC102

Direct replacement for original unit when fitted with the BOLT ON RING GEAR. Fitted with captive stud to aid fitting. Triumph TR3A TR4 TR4A Strong, powerful, offset gear-reduced starter motor, delivering huge cranking torque through a set of steel internal gears. Lightweight, compact and durable this unit starts the engine faster with immense power, whilst drawing less current from the battery.



### RAC102

Make	Model	Engine Size	Year
Triumph	TR3A	1991/2138	1957 - 1962
Triumph	TR4	2138	1961 - 1965
Triumph	TR4A	2138	1965 - 1967

### RAC102

Item	Value
Kilowatts	1.00 kW
Teeth	10
Voltage	12 V
Weight	4.10 kg